

## president's column

*donna j. leban, aia, lc, iesna;  
light/space/design  
2004 president aiaVT*

aiaVT



*The aiaVT newsletter is published by AIA Vermont,  
the Vermont Chapter of the  
American Institute of Architects.*

*Executive Director: Hanne Williams, Hon. AIAVT  
[aiavt@madrivert.com](mailto:aiavt@madrivert.com)*

*1662 Mill Brook Road  
Fayston, Vermont 05673  
p 802.496.3761  
f 802.496.3294*

It's November. Do you have your Continuing Education Units (CEU's) for the year? There are still some very good opportunities to obtain Health, Safety, Welfare credits necessary to maintain your Vermont and other State architectural licensing. Check [www.aiavt.org](http://www.aiavt.org) for a listing of them right here in Vermont.

Even if you didn't submit a project for the New England Regional Awards program, you are encouraged and welcome to attend the Saturday, November 13 program at Middlebury College. The lecture by Glenn Andres, PhD, Art and Architectural Historian at Middlebury, and tours of new projects at the College are not only fascinating, they provide 4.5 CEU's. An additional 2 units are available when you attend the free private tour of the Danby Marble Quarries. You don't need to attend the conference to attend the Marble Tour. However, you do need to call or send in your registration to Hanne. Don't miss this great opportunity, particularly if you are in the southern part of the State and can't make some of AIAVT's other programs.

Also, you may have noticed a new AIAVT benefit to help you get those AIA CEU's right in the comfort of your own home. Check out (literally) the CD's of programs from the AIA National Convention in Chicago. The audio with PowerPoint presentations generally provide 1.5 CEU's per course, and cover a wide range of topics. Steve Clark has done a fabulous job in outlining the available programs on the web site. Hanne will mail out the appropriate CD, which can be borrowed for a week at a time. Don't wait until the last minute, as we have a limited quantity of CD's.

I look forward to seeing many of you at the AIA New England Conference in a couple of weeks. And, have a happy Thanksgiving.

**excerpt from:  
House X  
Peter Eisenman**

**Rizzoli International Publications, 1982.**

p. 34-36

*Architect: In an essay on House I written in 1969 Kenneth Frampton resurrected the theme of the house as ruin. He was referring to the picturesque lineage of the architecture of metaphoric ruin, from the historically fragmented memory of Hadrian's Rome through the Piranesian fantasies of the eighteenth century. Since then, more figuratively speaking, a more contemporary 'ruin' has become visible- that of modern architecture itself. Its pristine, ideal forms not only have been in decline stylistically in recent years but have also lost the capacity to sustain the once-symbolic iconography of their often literal machine forms. In their place has arisen something called 'post-modernism,' a catchall term as it is used by most architects and critics for every form of non-mechanic and eclectic imagery. The ruin and the fragment have become the staple iconography of the new 'follies' of this new '-ism,' from the building as literal ruin, as in Site Inc.'s Best & Co.*

*cont.*

# 11.04:1

**firm profile-**  
**morriss-switzer:**  
*environments for health*  
*williston, vt*



CVPH nurse station



exeter healthcare

Founded in 1989, MorrisSwitzer~Environments for Health is the only New England based full service architectural firm committed exclusively to healthcare and senior living. MorrisSwitzer has provided full architectural services for over 1,000 healthcare projects, including: master planning, acute care hospitals, children's hospitals, women's services, ambulatory care centers, rehabilitation facilities, medical office buildings, skilled nursing, and senior living communities worldwide.

Principals Dan Morris, Jerry Switzer and Jill Boardman have created a culture of teamwork, flexibility and spirit. Their intensity and drive for excellence is shared by all MorrisSwitzer employees and is continually renewed by their participation on every project. Together, they represent nearly 50 years of healthcare architecture experience on national and international projects. Dan and Jerry are native mid-westerners, both formerly with large, national healthcare architecture firms. They moved to Vermont seeking the rich quality of life preserved in the Green Mountain State. Jill, formerly the president of Health Care Construction Corporation, manages the design-build division of MorrisSwitzer.

MorrisSwitzer is the perfect blend of seasoned professionals and promising young talent, ready to meet the demands of the present and the challenges of the future. Through ongoing educational programs in both architecture and healthcare, and continual in-house training, our clients can be assured of a top notch team of professional individuals who conduct themselves with confidence and compassion. As a mid-size, technologically-sophisticated health care architecture firm, MorrisSwitzer provides an extremely high level of service.

**cont.**

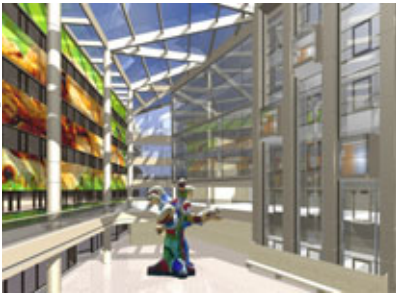
*department store, to the collaged fragments of Robert Stern's of Michael Graves' historic icons- pediments, gables, cornices, and moldings grafted together and disassociated from their formal and functional contexts. Thus the 'post-modern' metaphor of the ruin has superseded the modern metaphor of the machine.*

*This burying of modern architecture by the 'post-modern' savants (who, one suspects, have always known it is easier to sell a pitched roof than a flat one) in order to resurrect their loose mixture of historicism and eclecticism, this renunciation of the alleged elitism of rational imagery in favor of an operation that in fact has as one of its objectives not only the elimination of the particular critical ideology of modernism but the elimination of ideology in general from architecture suggests that it is not so much the forms of modernism, the particular social, political, or aesthetic ideology its practitioners espoused, but more the fact that the forms contained an ideology at all that is at the core of the 'post-modern reaction.*

*cont.*

**11.04:2**

schneider children's hospital atrium



gablers at east mountain



tampa childrens hospital



Our designs emphasize the importance of the healing environment of a healthcare facility while encouraging patient and staff safety, security, and efficiency. We understand and value the special considerations required in hospitals and in senior living. We understand that quality in healthcare design ultimately means the highest-level of patient care at an affordable cost. Together with hospital administration, caregivers, support services, patients and family, we create an appropriate and compassionate environment for healing.

MorrisSwitzer has a proven history of working closely with a variety of consultants to enhance the services we provide our clients. This integration has meant a synergistic blending of knowledge, skills, services and personalities that bring a project from a preliminary concept into a high quality and aesthetically pleasing facility. We value the relationships we form with specialists, and we build our own expertise and grow from the collaborations created in various joint ventures.

Some MorrisSwitzer projects include Southwestern Medical Center in Bennington, the Vermont Children's Hospital at Fletcher Allen Health Care in Burlington, Wake Robin Life Care Community in Shelburne, Central Vermont Medical Center in Berlin, and Northwestern Medical Center in Saint Albans. MorrisSwitzer has numerous clients in Maine and works closely with Champlain Valley Physician's Hospital in Plattsburgh as well as a significant number of other New York Hospitals. Jerry Switzer was personally chosen to design the Schneider Children's Medical Center of Israel, a 224-bed freestanding tertiary care children's hospital and is currently designing the \$140 million Schneider Children's Hospital on Long Island. Recognized as specialists in Children's Hospitals, Jerry and his team were awarded the BSA New England Healthcare Assembly Award for the design of the Tampa Children's Hospital in Florida.

To learn more about MorrisSwitzer-Environments for Health, visit [www.morriswitzer.com](http://www.morriswitzer.com).

*As has traditionally been the case in the twentieth century, the house has become the focal point for much of the recent debate. Yet in all of the supposed revisionism, the classical imagery of 'houseness' (the concept that Gaston Bachelard identified with a particular coalescence of form about a central hearth of focus, under a pitched or gabled but always enclosing roof) has remained essentially unchanged- despite the figurative gestures and inventive decoration of facades: nothing in the plan or section of the so-called 'post-modern' house suggests that any cultural or institutional change animates it. Thus, in spite of what is superficially a 'new' imagery of the ruin and fragment in this architecture, the result turns out to be no more than decorative, literal, or nostalgic applique because the house ultimately retains its basic conceptual unity: that is, in its relationship to man, the house remains a mimetic, symbolic, and functional entity, as it always has been.*

*House X is strongly colored by metaphoric ideas of ruin, decay, and falling to pieces, but it attempts to use these ideas in a totally different fashion from the post-modernists. While the imagery of the post-modernists contains a covert antipathy to anything ideological, the imagery of House X is rooted in a pervasive and explicit ideological concern with a cultural condition, namely the apparent inability of modern man to sustain any longer a belief in his own rationality and perfectability. It can be distinguished from*

cont.

**11.04:3**

## better buildings by design conference 2005:

*design competition:  
energy efficiency in buildings  
celebrating excellence  
in energy conscious building design*

*This competition recognizes innovative and integrated design approaches towards energy efficiency in Vermont's commercial, institutional, industrial and multifamily buildings.*

*Design professionals are now invited to submit entries in the 2005 competition. Projects must be located in Vermont and substantially completed between January 1, 2001 and December 31, 2004. This year's competition has two categories, one for New Construction and one for Renovation & Retrofit. The top projects in each category will receive the award for Best Integrated Design Solution for Energy Efficiency.*

*All entries are required to be submitted in poster format. Posters will be showcased at the Better Buildings by Design Conference on February 9 and 10, 2005 at the Sheraton Conference Center in South Burlington.*

*Posters and registration forms are due December 22, 2004. Visit [www.encyvermont.com](http://www.encyvermont.com) for more information and to download the application materials.*

## aiaVT welcomes

alisa dworsky, *assoc. aia of montpelier*  
daniel sagan, *assoc. aia of montpelier*  
gary hall, *professional affiliate of burlington*

## advanced buildings™ launches website - establishes community of practice

MADISON, Wis. (September 27, 2004) - The Energy Center of Wisconsin and NewBuildings Institute announce the launch of [www.poweryourdesign.com](http://www.poweryourdesign.com), the virtual home of Advanced Buildings, a suite of technical resources, trainings and support materials to improve the way buildings are designed, built and used.

The website presents a wealth of information geared toward planners, architects, engineers, contractors, developers and owners. Attendees of the Advanced Buildings training receive special access to a secure online library containing design checklists, training materials and other documents they can adapt to their own presentations to effectively promote high performance to their clients.

Publicly available resources include sourcebooks and guides such as the Advanced Buildings Benchmark, Benefits Guide and Profiting from High Performance, as well as a showcase of profiles of high performance buildings.

Detailed design guidelines on gas cooling technologies, small HVAC systems, large VAV systems and productivity and daylighting research are also provided.

Advanced Buildings is jointly developed by the New Buildings Institute and Energy Center of Wisconsin through the support of multiple sponsors. Using whole building patterns, design process tools and educational resources, it provides designers with the resources to incorporate integrated design strategies on future projects to reduce energy usage and improve indoor environmental quality. Advanced Buildings is compatible with both LEED and ENERGY STAR.

Energy Center of Wisconsin is a private, nonprofit organization dedicated to improving energy sustainability including support of energy efficiency, renewable energy and environmental protection. The Energy Center provides objective research, information and education on energy issues to businesses, professionals, policymakers and the public.

cont.

---

*the post-modernist reaction against the Modern Movement in that it participates in the more general concerns of modernism, that is, in the intellectual propositions initiated in this century as part of a broad cultural phenomenon parallel to and replacing the preceding tradition of humanism. It is this broader argument which is the basis for House X and distinguishes it from the 'ruins' of post-modernism.*

---

*Voice: Deconstruction in the literary sense is a critical and analytical as opposed to a synthetic activity. It presupposes a 'work' already in existence. What is not clear from what you have said thus far is what is this 'work' and how is it being 'decomposed'?*

cont.

# 11.04:4



## save the date!

*Special Pre-Conference Workshop  
For Architects, Engineers, and Design/Builders*

*(one day before the Better Buildings by Design Conference)*

*Tuesday, February 8, 2005,  
Sheraton Burlington Conference Center  
9:00AM-4:00PM*

*Integrating High Performance:  
Improving the Way Commercial Buildings are Designed, Built  
and Used*

*Learn from Jeff Johnson, New Buildings Institute and Abby  
Vogen, Energy Center of Wisconsin about High Performance  
design, how it relates to LEED™ and ENERGY STAR® and  
how to integrate it cost-effectively into your very next project.*

*For more information, visit [www.encyvermont.com](http://www.encyvermont.com).  
Registration will begin in December.*

We feel ArchiCAD offers us an advantage over other systems. It is quickly mastered and produces superior output both quantitatively and qualitatively.

- David Johnson, Burnell Architects

**IT'S TIME**



See why architects in New England are swiching to ArchiCAD 9.

Call for a free demo CD  
800-383-5195  
[www.intcad.com](http://www.intcad.com)



Energy Center of Wisconsin  
455 Science Drive, Suite 200  
Madison, WI 53711  
608.238.4601  
[www.ecw.org](http://www.ecw.org)

New Buildings Institute is a nonprofit public benefits organization dedicated to making buildings better for people and the environment through research, guidelines, codes and training.

New Buildings Institute  
142 East Jewett Boulevard  
White Salmon, WA 98672  
509.493.4468  
[www.newbuildings.org](http://www.newbuildings.org)

Advanced Buildings is sponsored by:

Alliant Energy	New York State Energy Research and Development Authority
Burlington Electric	Northeast Energy Efficiency Partnerships, Inc.
California Energy Commission	Northwest Energy Efficiency Alliance
Department of Energy	NSTAR
Efficiency Vermont	Southern California Edison
Energy Foundation	Vermont Department of Public Service
Environmental Protection Agency	Vermont Gas
Iowa Energy Center	We Energies
Madison Gas & Electric Company	Wisconsin Department of Administration
National Grid, USA	

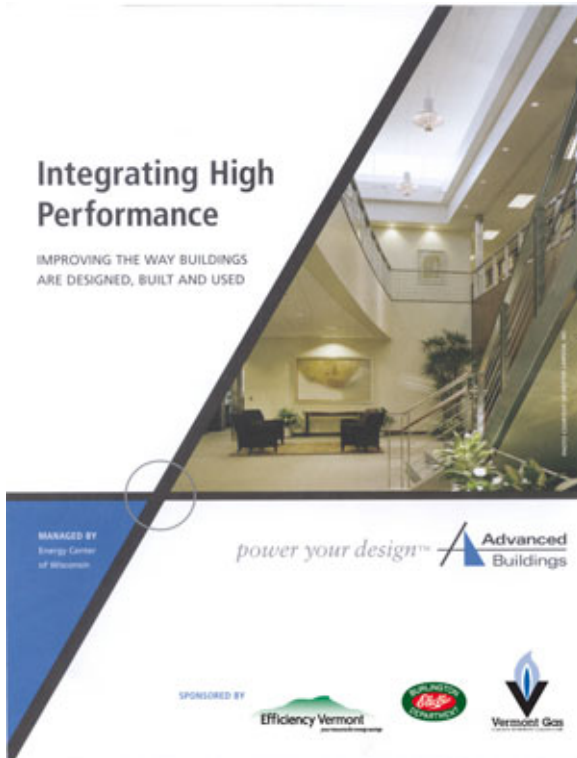
*Architect: The work resides in a pre-existent and disjunctive universe- 'pre-existent' not in an historical or temporal sense, but in an absolute causal effect on the determination of the object- that is, the process does not imply the object or cause it to come into existence as a response to process, but rather a state of 'objecthood' exists, or pre-exists, independent of the process.*

*Voice: In your earlier houses there was an underlying concern, as you have said, for a rational explanation, which at times almost amounted to a moral justification for your activity and your results. Of course, when one denies the importance of function, program, meaning, technology, and client,- constraints traditionally used to justify and in a way support from-making- the rationality of process and the logic inherent in form becomes almost the last 'security' or legitimation available. Thus, the use of the term 'decomposition' seems to question both the rationality of the process and the imperative of justification.*

*Architect: The term suggests a reversal of the traditional idea of composition, which generally involves an idea of sequential transformation, either implicitly in most cases or explicitly- that is, the making of something more complex from something simple. Traditionally, the architect produced an initial form-image in response to a program of*

*cont.*

# 11.04:5



## **middlebury indoor tennis wins 2004 outstanding facility award from usta**

MIDDLEBURY, VT – Middlebury Indoor Tennis has received a 2004 Outstanding Facility Award by the USTA (United States Tennis Association). The USTA's Outstanding Facility Awards Program, now in its 23<sup>rd</sup> year, encourages higher standards for construction of public and private facilities throughout the country.

Middlebury Indoor Tennis (MIT) was one of three New England facilities out of fifteen nation-wide selected as outstanding tennis facilities. Among the criteria for selection were adaptation to site and overall layout, ease of maintenance, excellence of court surface and lights, and accommodations for players and spectators. MIT is the only facility honored from New England in the "private" category (as opposed to the Municipal and Collegiate categories).

"We are proud to honor these facilities for their effort, dedication, and support," said Kurt Kamperman, Chief Executive, Community Tennis, USTA.

**Truex Cullins & Partners Architects** designed the facility for Middlebury Indoor Tennis in 2001.

The design team also included the following consultants:

**Civil Engineers:**

Phelps Engineering  
Middlebury, VT

**Builders:**

Naylor and Breen Builders  
Brandon, VT.

**Court Surface, Nets and Backdrops:**

Vermont Recreational Surfacing and Fencing  
Barnet, VT.



**cont.**

*needs. This was modified during the process of design and also complicated and refined to correspond to the multiple and often conflicting demands of site, material, function, and meaning; but, at the same time, it maintained a link to the original image. The understanding of the final image was thought to reside in part in the capacity to register the final object back to the original concept- by a kind of reverse mental process, which again implied some implicit, if not explicit process of transformation active in the process of design.*

**11.04:6**